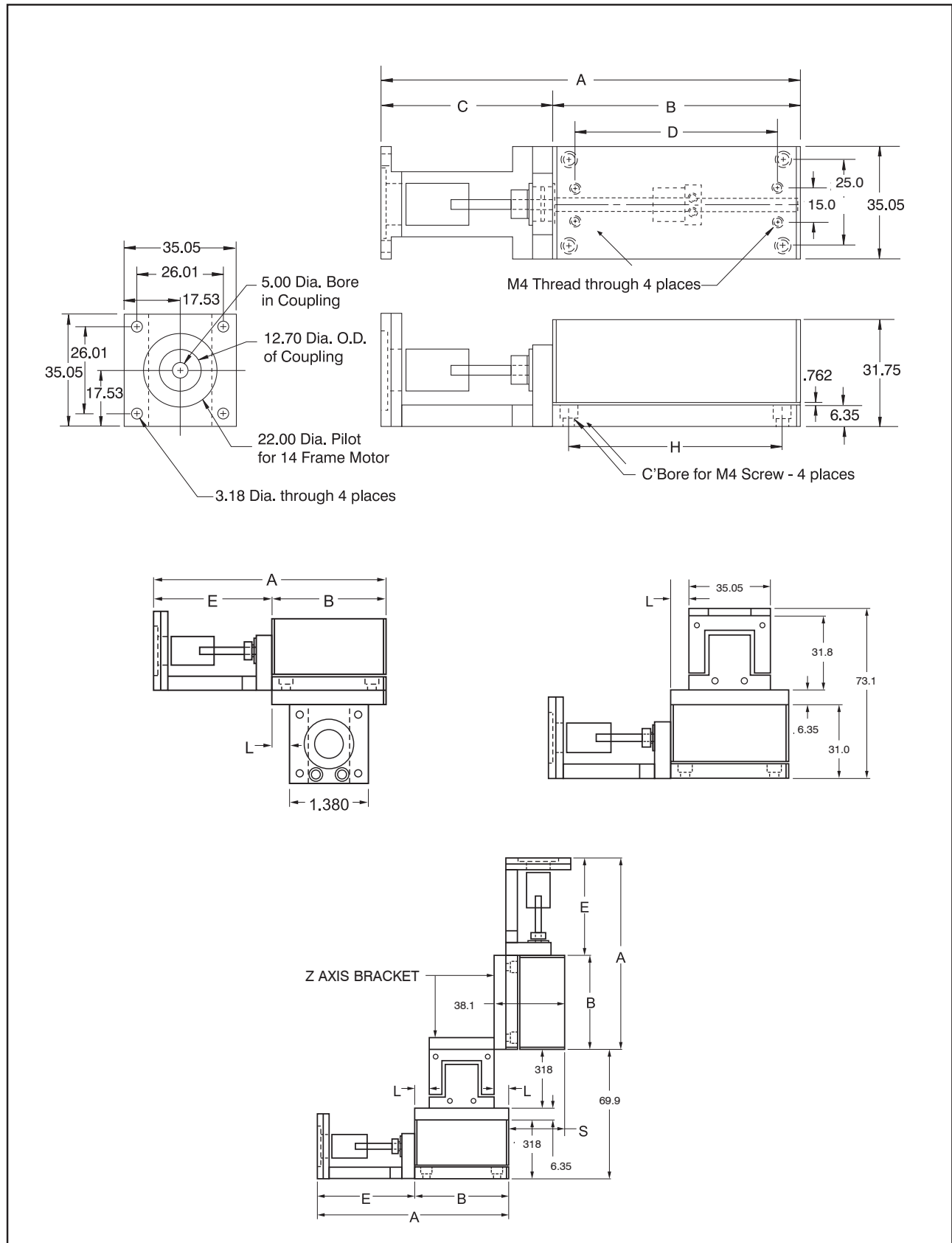
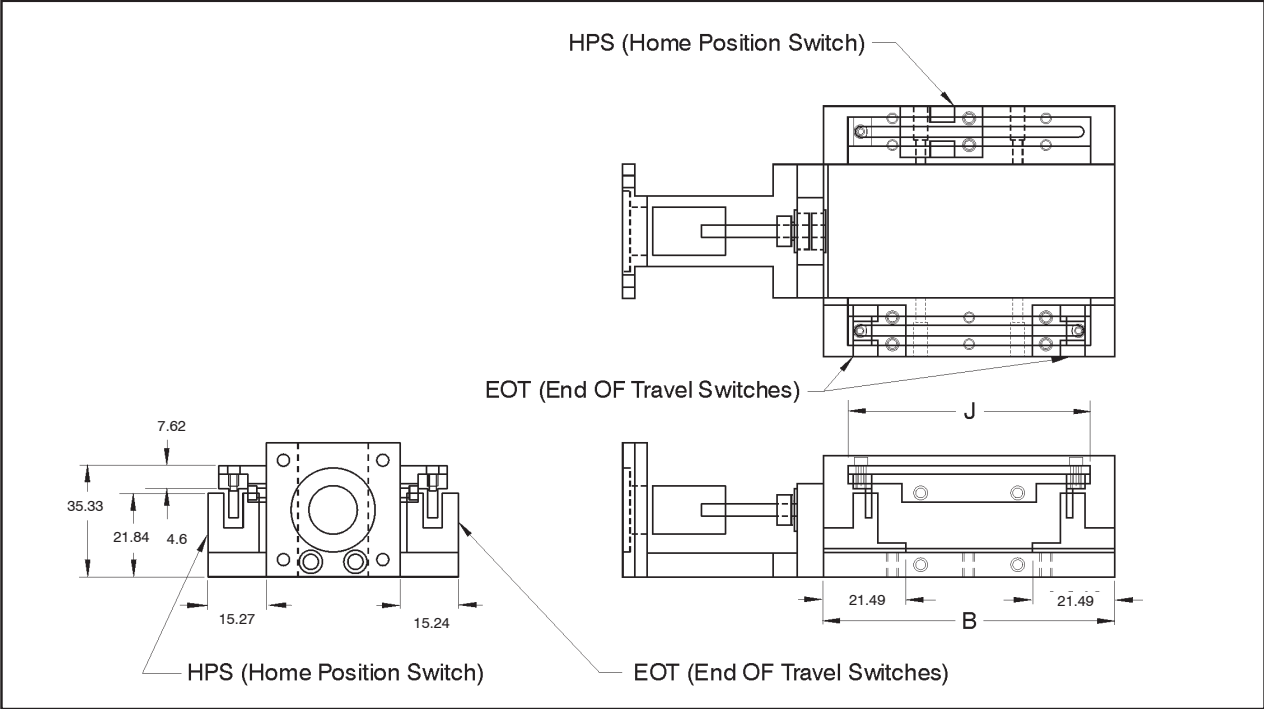


Mini Posi-Drive™ Series LSA1, LRSA1

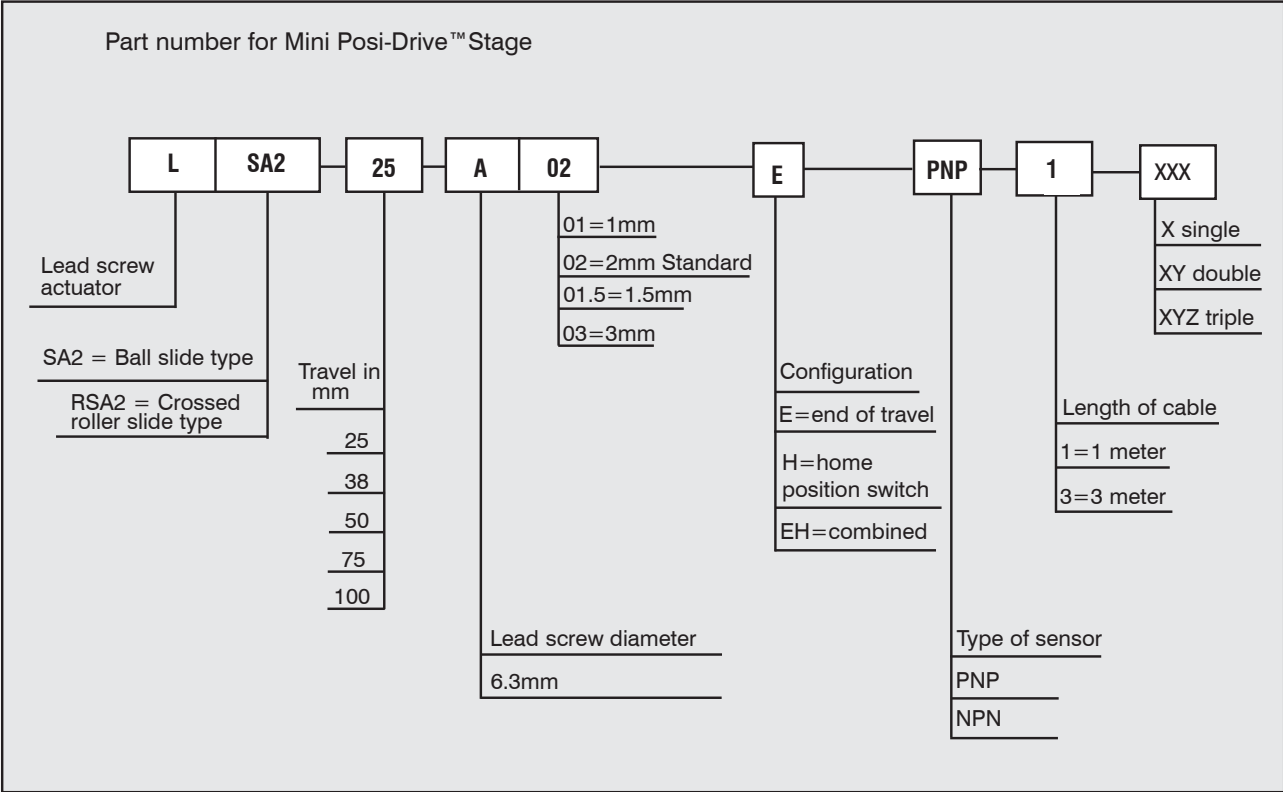
Designed for NEMA 14 motor frame, other motor adaptors available. Supplied with coupling for 5mm motor shaft.
Couplings with inch and metric bore available. Standard travels of 25mm, 50mm, 75mm and 100mm





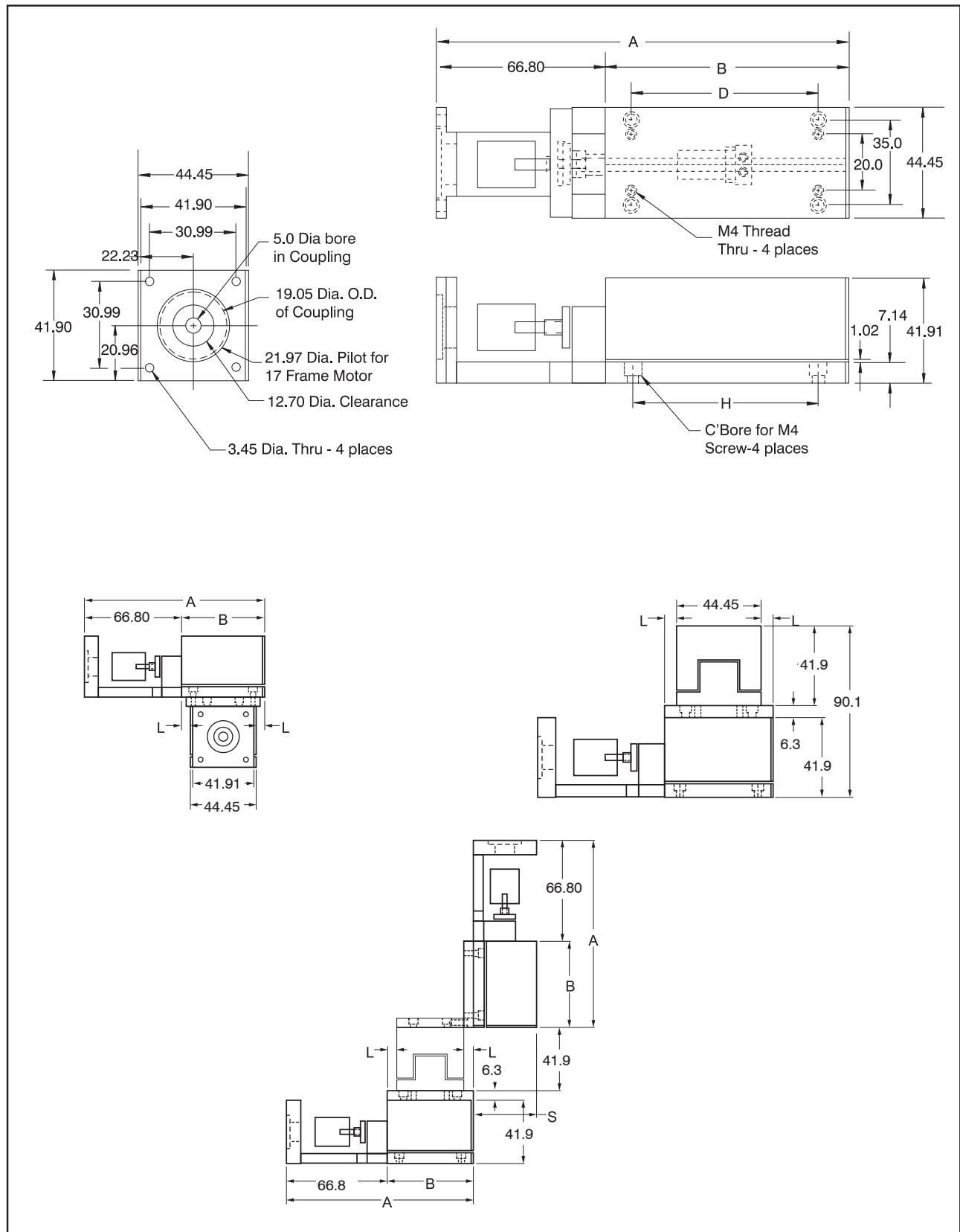
Maximum Recommended
Revolutions Per Second

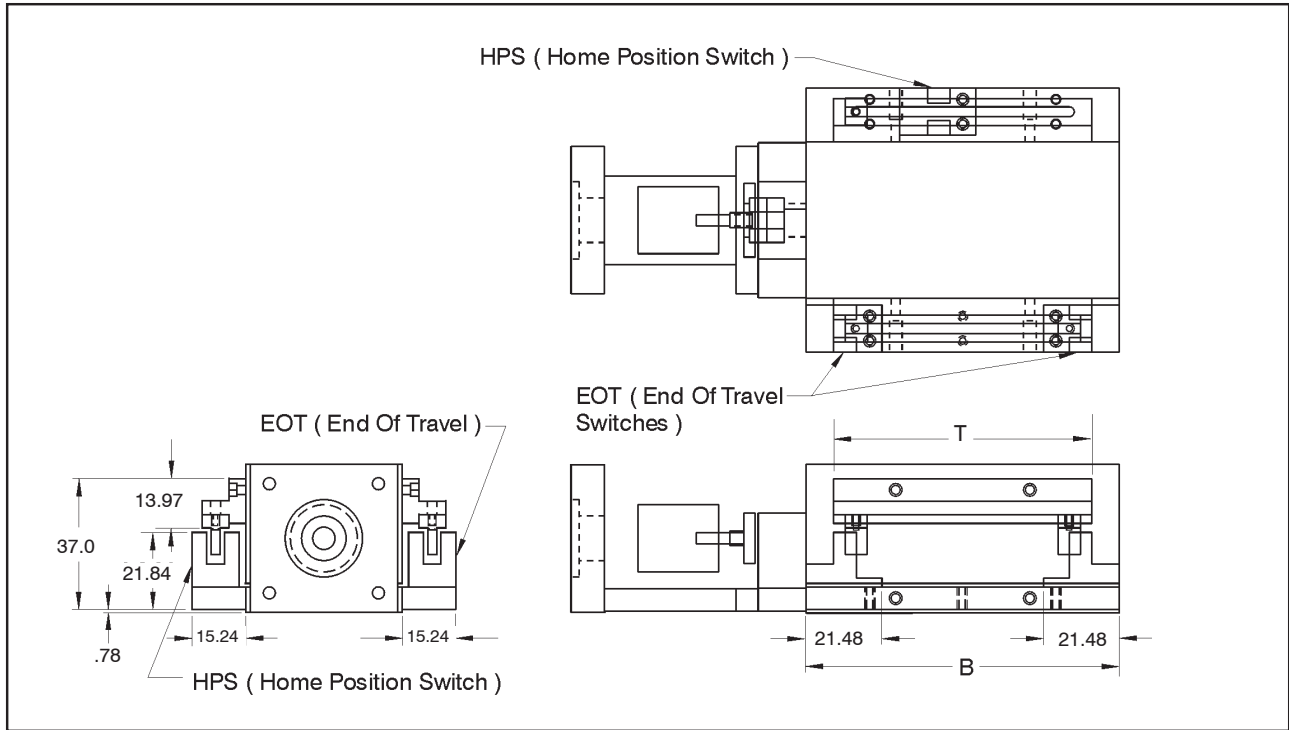
Lead: .5mm	20 RPS
------------	--------



Mini Posi-Drive Series LSA2, LRSA2

Designed for NEMA 17 motor frame, other motor adaptors available. Supplied with coupling for 5mm motor shaft.
Couplings with inch and metric bore available. Uses a leadscrew with anti-backlash nut. Standard lead is 2mm. Leads available at no additional cost 1mm, 1.5mm, 2mm, 3mm and 4mm. Standard travels of 25, 38, 50, 75, and 100mm

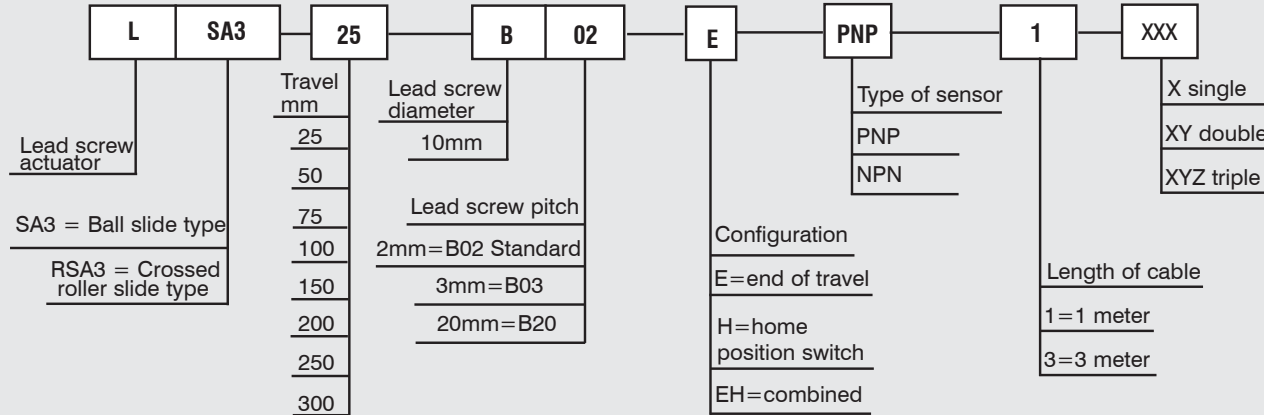




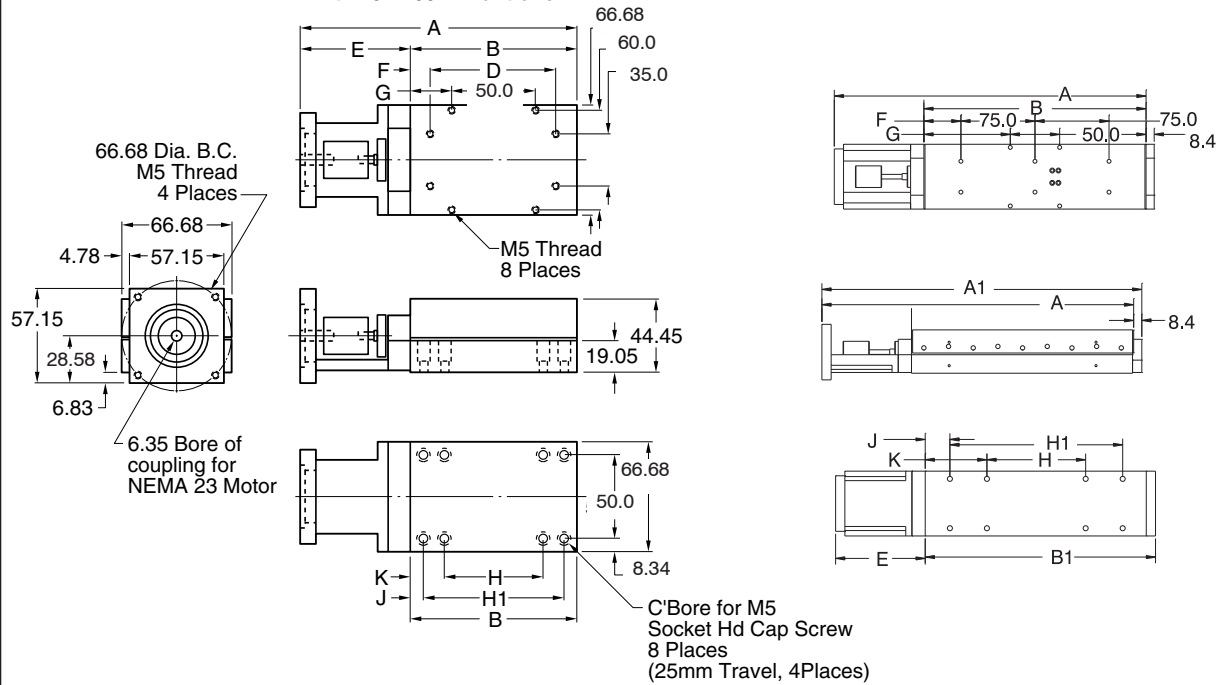
Maximum Recommended
Revolutions Per Second

Lead: .2mm	20 RPS
------------	--------

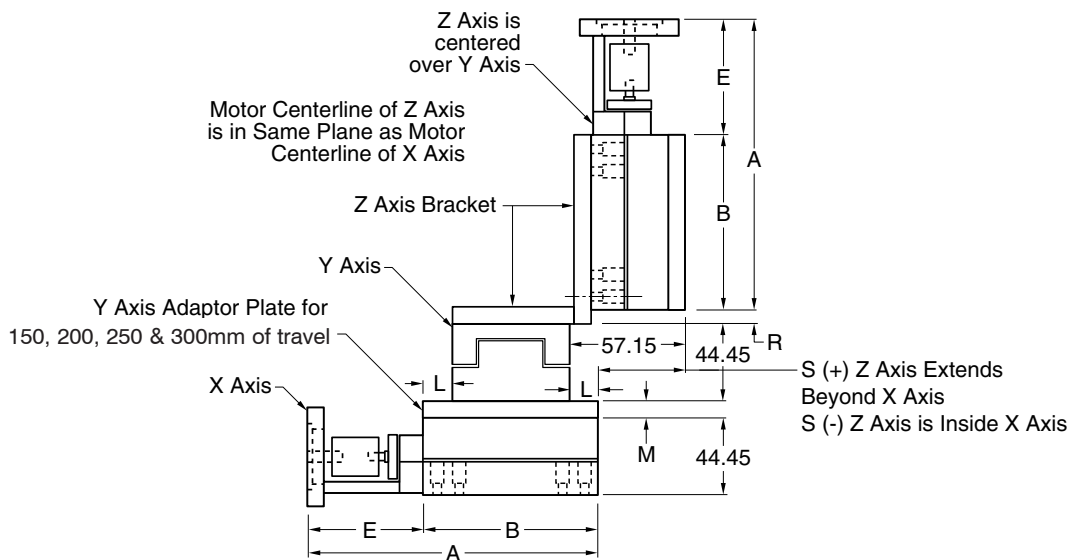
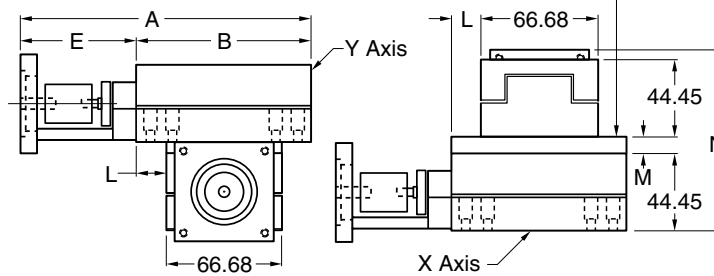
Part number for Posi-Drive™ Stage



**Carriage Dimensions for Posi-Drives
with 25 - 100mm of travel**



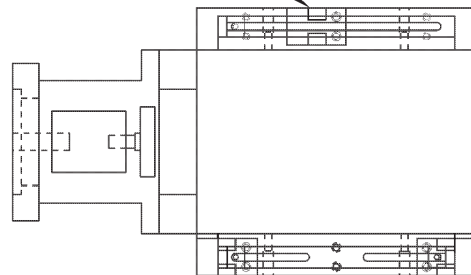
**Y Axis Adaptor Plate for
150, 200, 250 & 300mm of travel**



Maximum Recommended
Revolutions Per Second

Lead: 2mm	20 RPS
Lead: 3mm	10 RPS
Lead: 20mm	10 RPS

HPS (HOME POSITION SWITCH)



EOT (END OF
TRAVEL SWITCHES)

