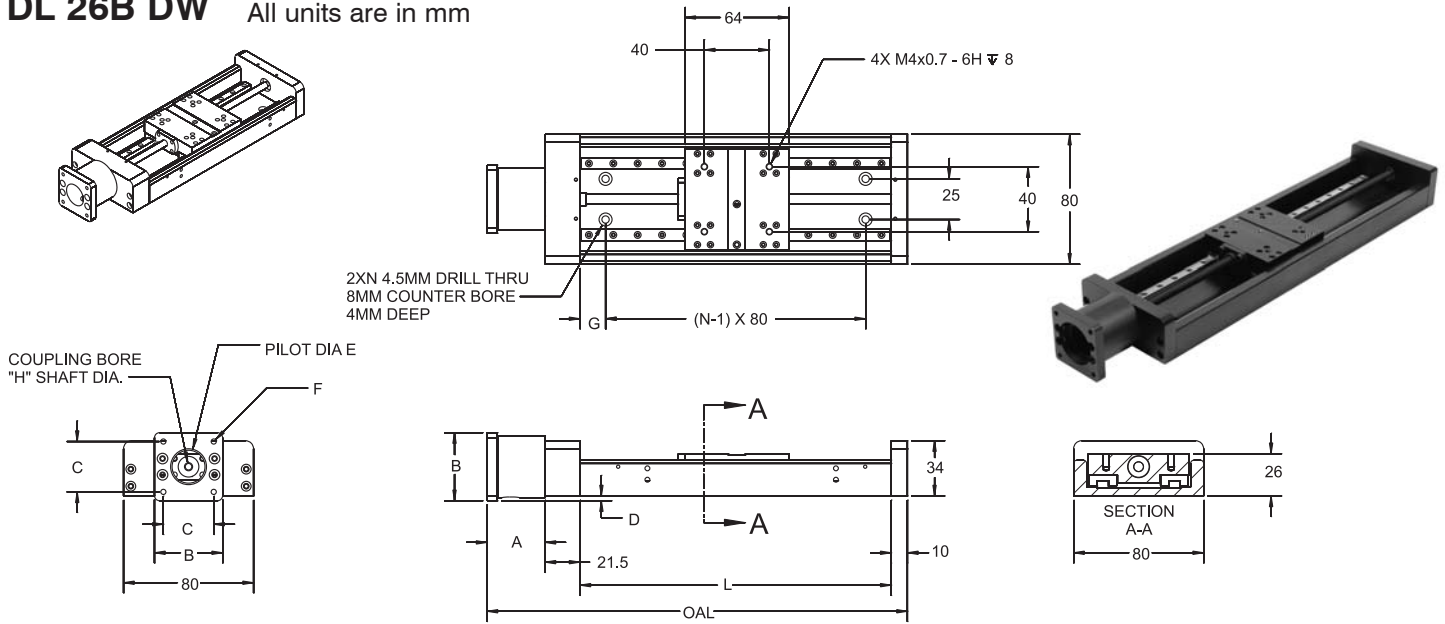




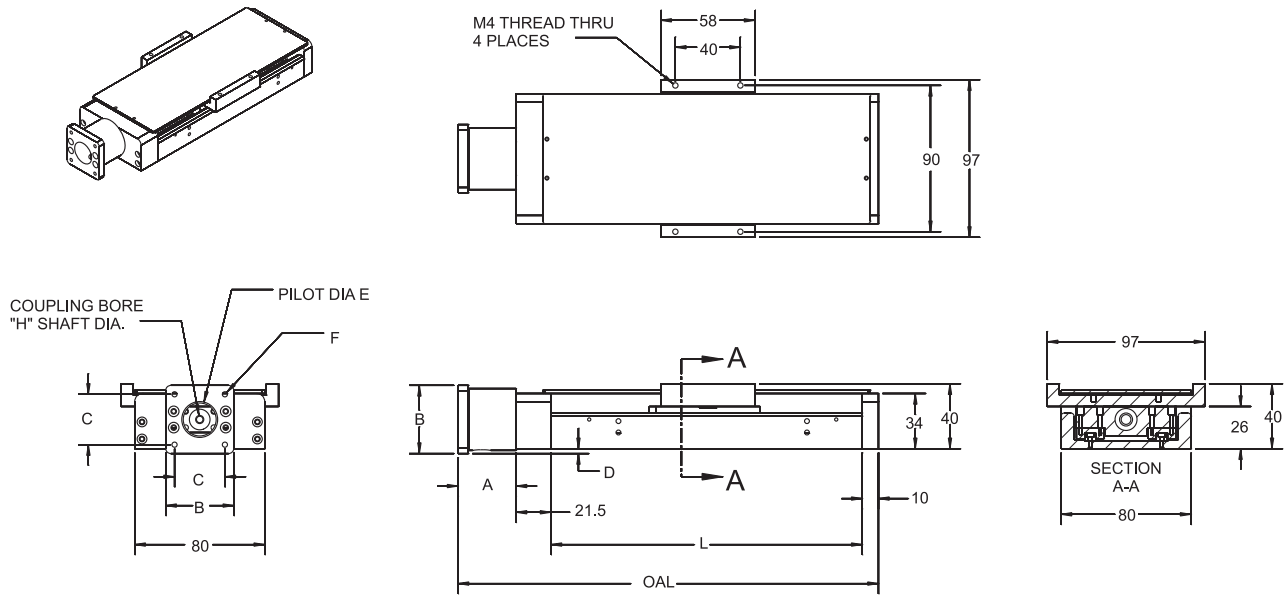


# DL 26B DW

**DL 26B DW** All units are in mm



## DL 26B DW With Cover



### Motor Options

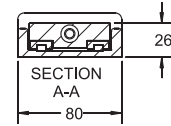
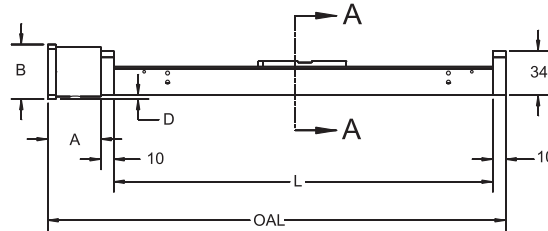
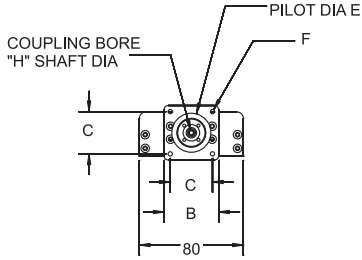
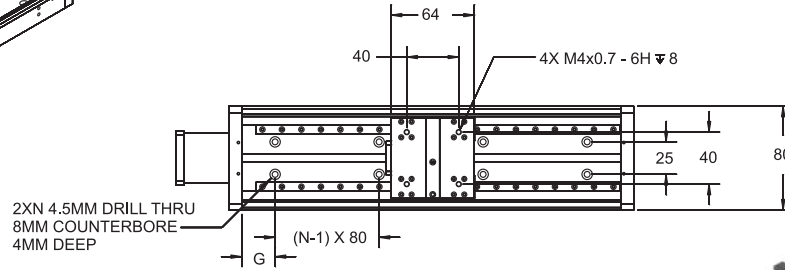
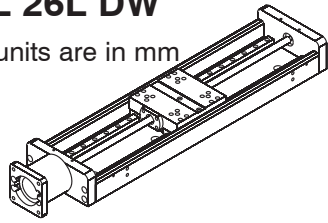
STEPPER MOTOR											
Travel	OAL	L	N	G	A	B	C	D	E	F	H
70	208.7	141.5	2	30.75							
120	258.7	191.5	3	15.75	35.7	42	31	3	22	3.2 THRU	5
170	308.7	241.5	3	40.75							
220	358.7	291.5	4	25.75							

SERVO MOTOR											
Travel	OAL	L	N	G	A	B	C	D	E	F	H
70	213.8	141.5	2	30.75							
120	263.8	191.5	3	15.75	40.8	42	32.5	3	30	M4 THREAD	6
170	313.8	241.5	3	40.75							
220	363.8	291.5	4	25.75							

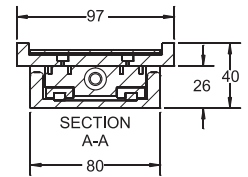
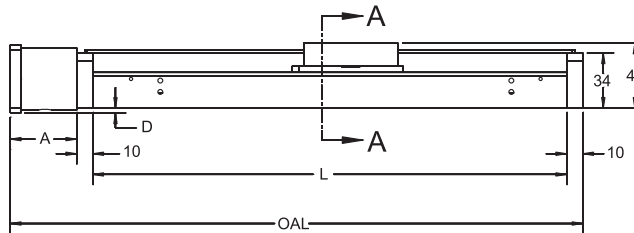
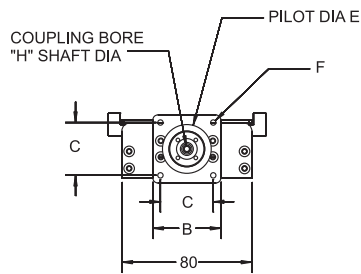
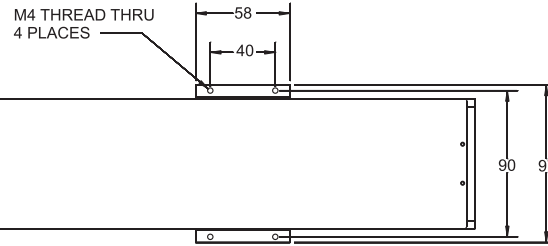
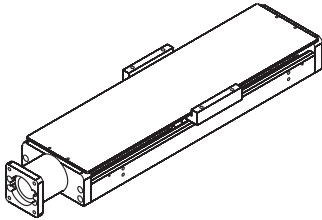
# DL 26L DW

## DL 26L DW

All units are in mm



## DL 26L DW With Cover



## Motor Options

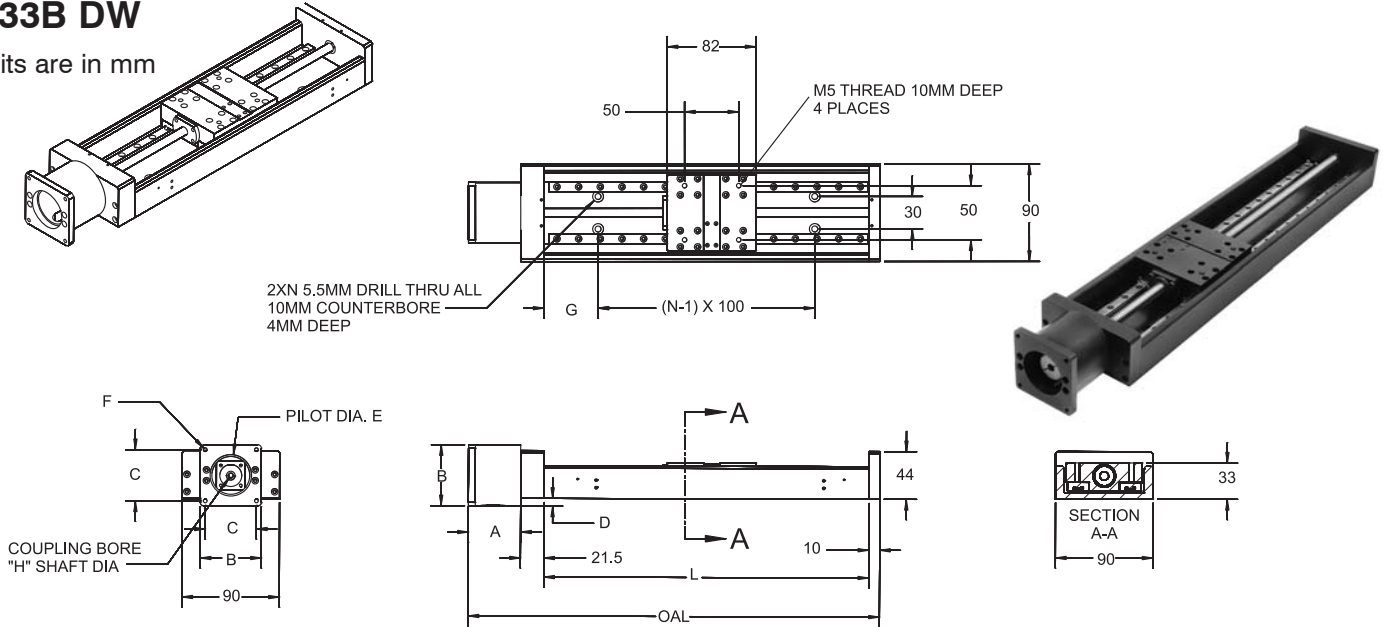
STEPPER MOTOR											
Travel	OAL	L	N	G	A	B	C	D	E	F	H
70	197.2	141.5	2	30.75							
120	247.2	191.5	3	15.75	35.7	42	31	3	22	3.2 THRU	5
170	297.2	241.5	3	40.75							
220	347.2	291.5	4	25.75							

SERVO MOTOR											
Travel	OAL	L	N	G	A	B	C	D	E	F	H
70	202.3	141.5	2	30.75							
120	252.3	191.5	3	15.75	40.8	42	32.5	3	22	M4 THREAD	6
170	302.3	241.5	3	40.75							
220	352.3	291.5	4	25.75							

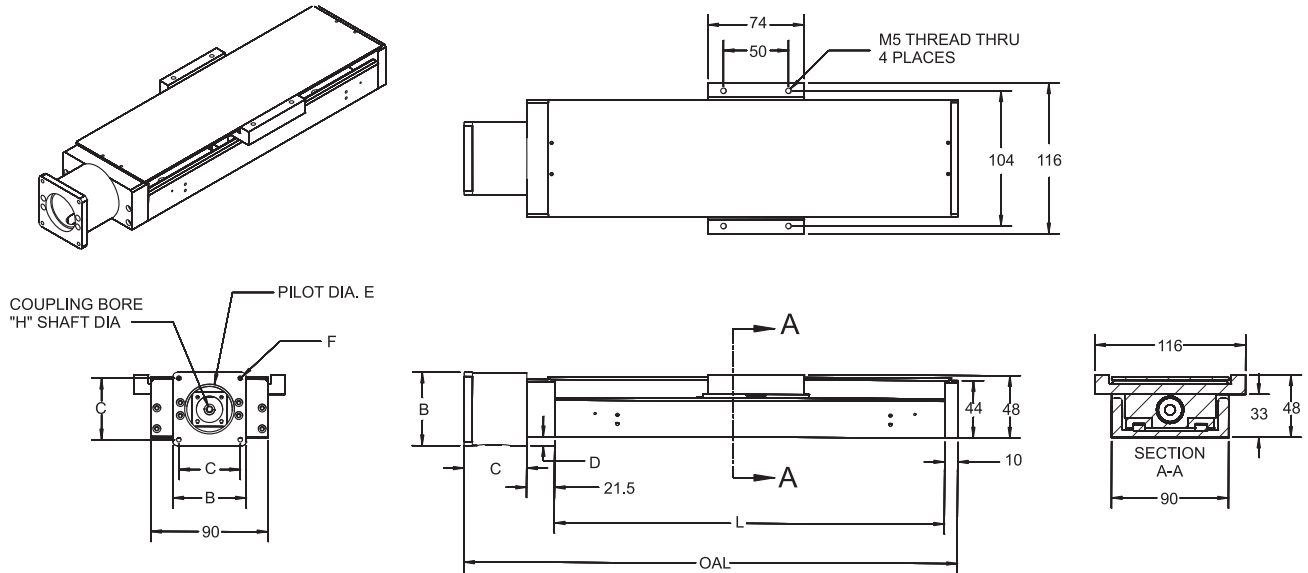
# DL 33B DW

## DL 33B DW

All units are in mm



## DL 33B DW With Cover



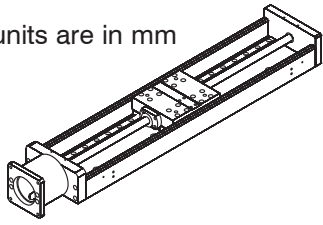
## Motor Options

Travel	OAL	L	N	G	STEPPER MOTOR							
					A	B	C	D	E	F	H	
60	229.6	150	2	25								
110	279.6	200	2	50	48.1	56.4	47.2	7.2	38.2	8-32 THREAD	6.35(.250")	
210	379.6	300	3	50								
310	479.6	400	4	50								
410	579.6	500	5	50								

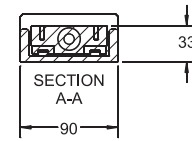
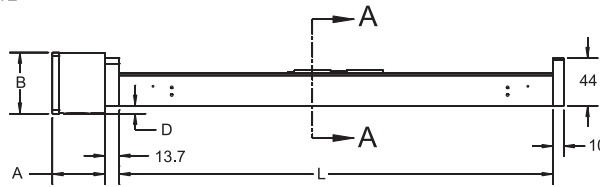
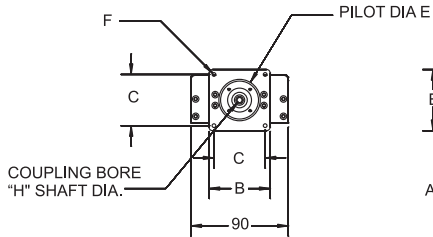
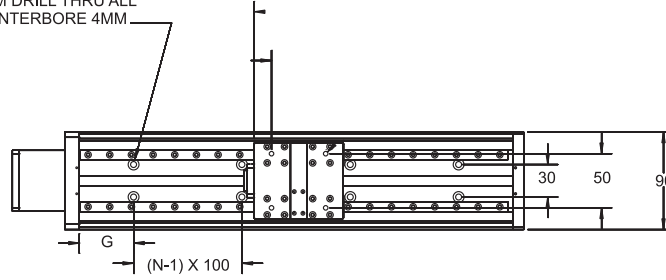
Travel	OAL	L	N	G	SERVO MOTOR						
					A	B	C	D	E	F	H
60	234.7	150	2	25							
110	284.7	200	2	50	53.2	60	49.5	8.9	50.1	M5 THREAD	8
210	384.7	300	3	50							
310	484.7	400	4	50							
410	584.7	500	5	50							

### DL 33L DW

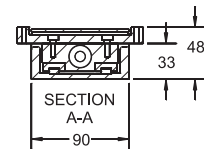
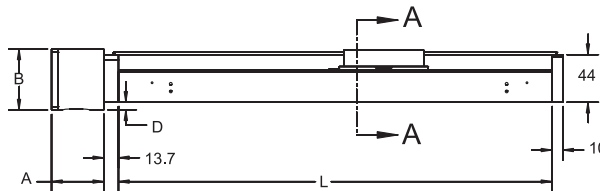
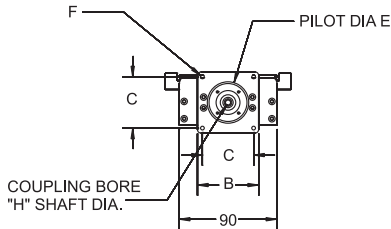
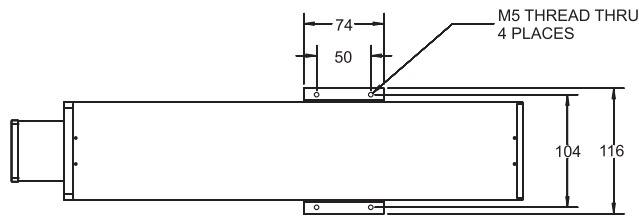
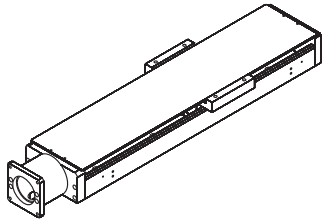
All units are in mm



2 X N 5.5MM DRILL THRU ALL  
10MM COUNTERBORE 4MM



### DL 33L DW With Cover



### Motor Options

Travel	OAL	L	N	G	STEPPER MOTOR							
					A	B	C	D	E	F	H	
60	221.8	150	2	25								
110	271.8	200	2	50	48.1	56.4	47.2	7.2	38.2	8-32 THREAD	6.35(.250")	
210	371.8	300	3	50								
310	471.8	400	4	50								
410	571.8	500	5	50								

Travel	OAL	L	N	G	SERVO MOTOR						
					A	B	C	D	E	F	H
60	226.9	150	2	25							
110	276.9	200	2	50	53.2	60	49.5	8.9	50.1	M5 THREAD	8
210	376.9	300	3	50							
310	476.9	400	4	50							
410	576.9	500	5	50							