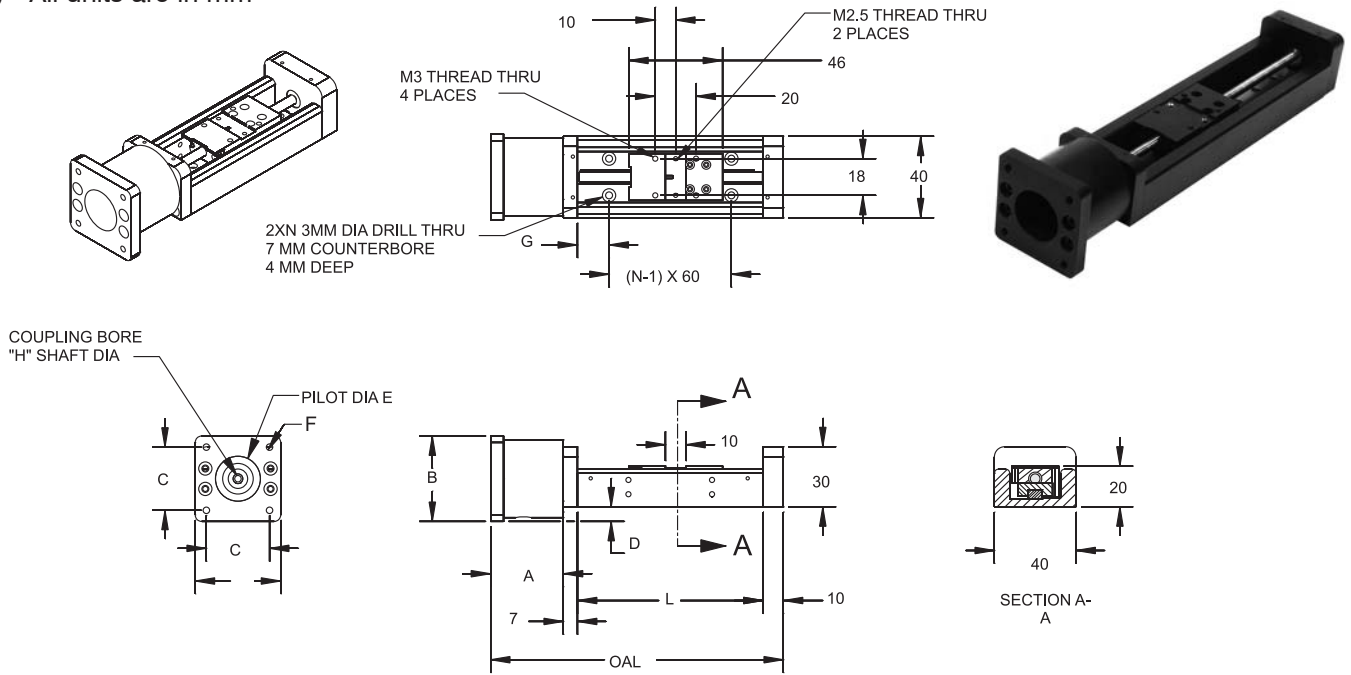
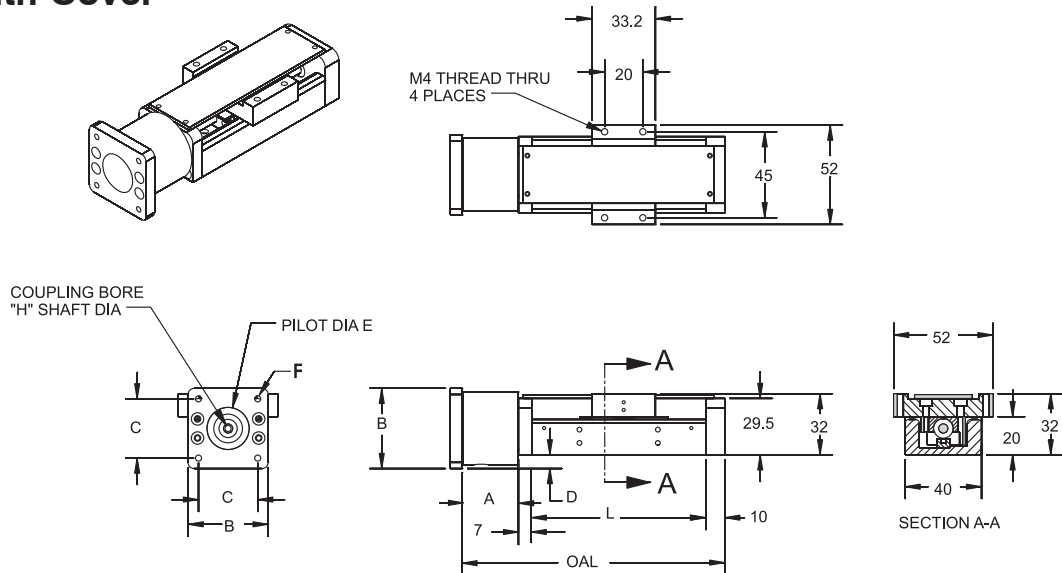


DL 20

DL 20 All units are in mm



DL 20 With Cover



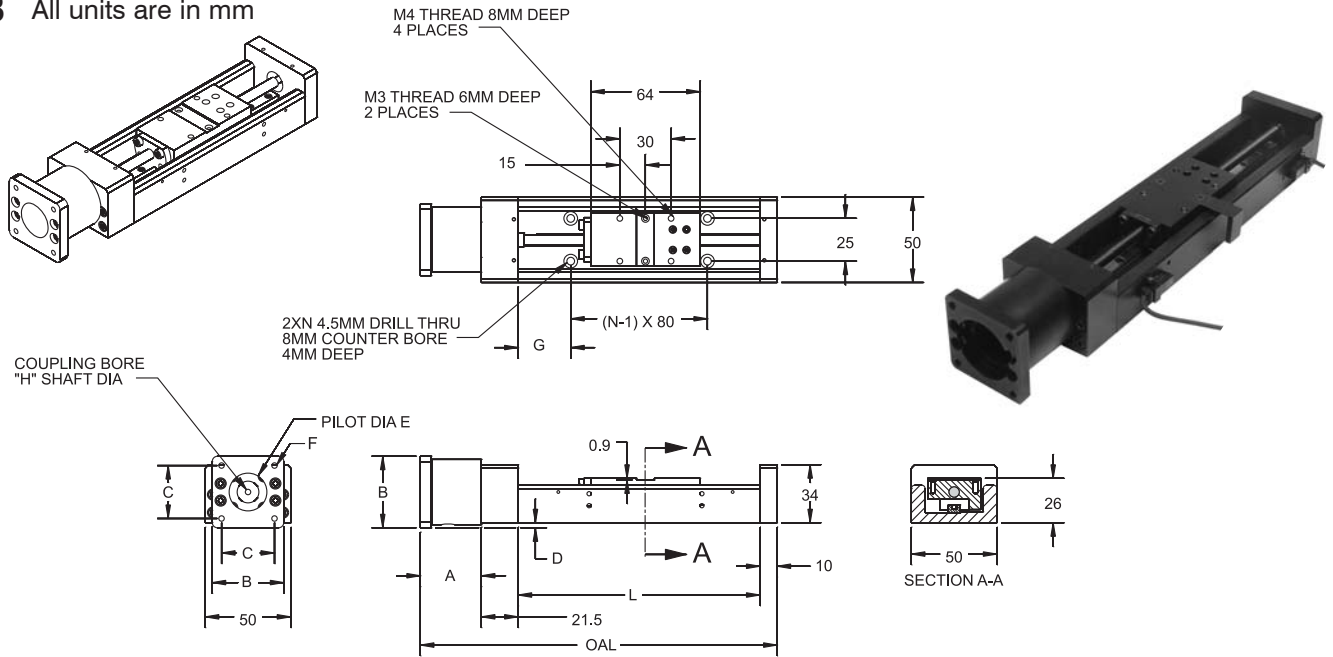
Motor Options

STEPPER MOTOR											
Travel	OAL	L	N	G	A	B	C	D	E	F	H
45	143.7	91	2	15.5							
95	193.7	141	3	10.5	35.7	42	31	7.1	22	3.2 THRU	5
145	243.7	191	3	35.5							

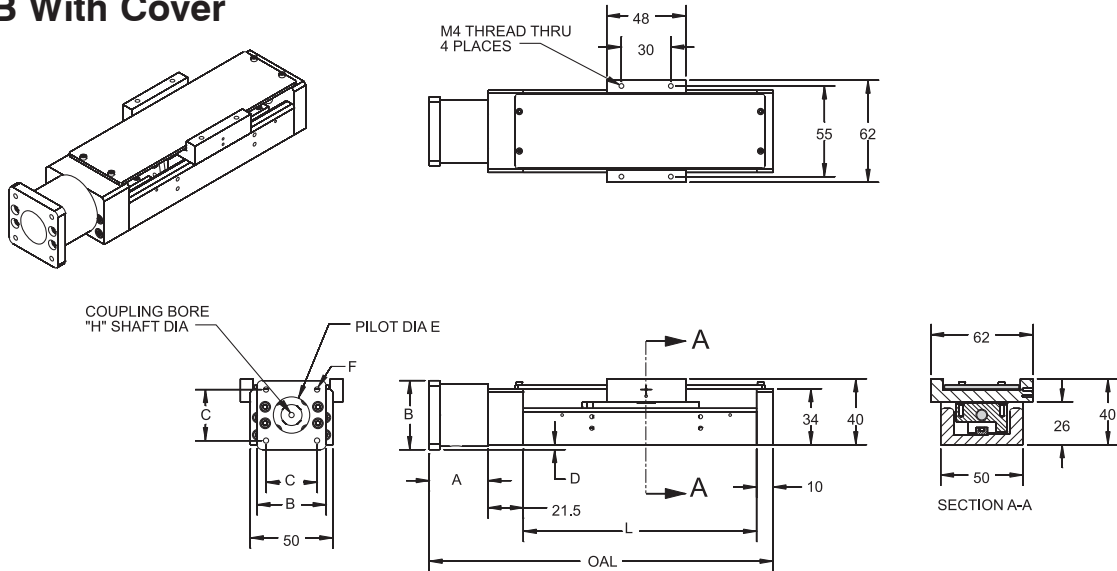
SERVO MOTOR											
Travel	OAL	L	N	G	A	B	C	D	E	F	H
45	148.8	91	2	15.5							
95	198.8	141	3	10.5	40.8	42	32.5	7.1	30	M4 THREAD	6
145	248.8	191	3	35.5							

DL 26B

DL 26B All units are in mm



DL 26B With Cover



Motor Options

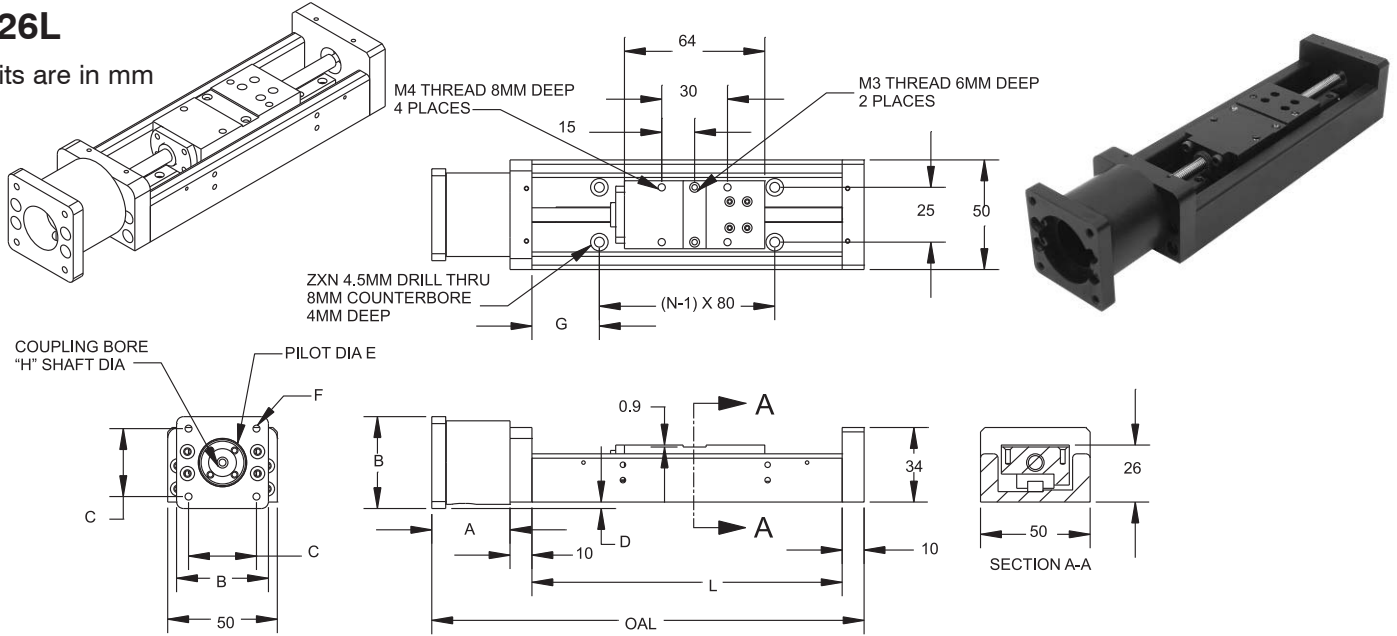
STEPPER MOTOR											
Travel	OAL	L	N	G	A	B	C	D	E	F	H
70	208.7	141.5	2	30.75							
120	258.7	191.5	3	15.75	35.7	42	31	3	22	3.2 THRU	5
170	308.7	241.5	3	40.75							
220	358.7	291.5	4	25.75							

SERVO MOTOR											
Travel	OAL	L	N	G	A	B	C	D	E	F	H
70	213.8	141.5	2	30.75							
120	263.8	191.5	3	15.75	40.8	42	32.5	3	30	M4 THREAD	6
170	313.8	241.5	3	40.75							
220	363.8	291.5	4	25.75							

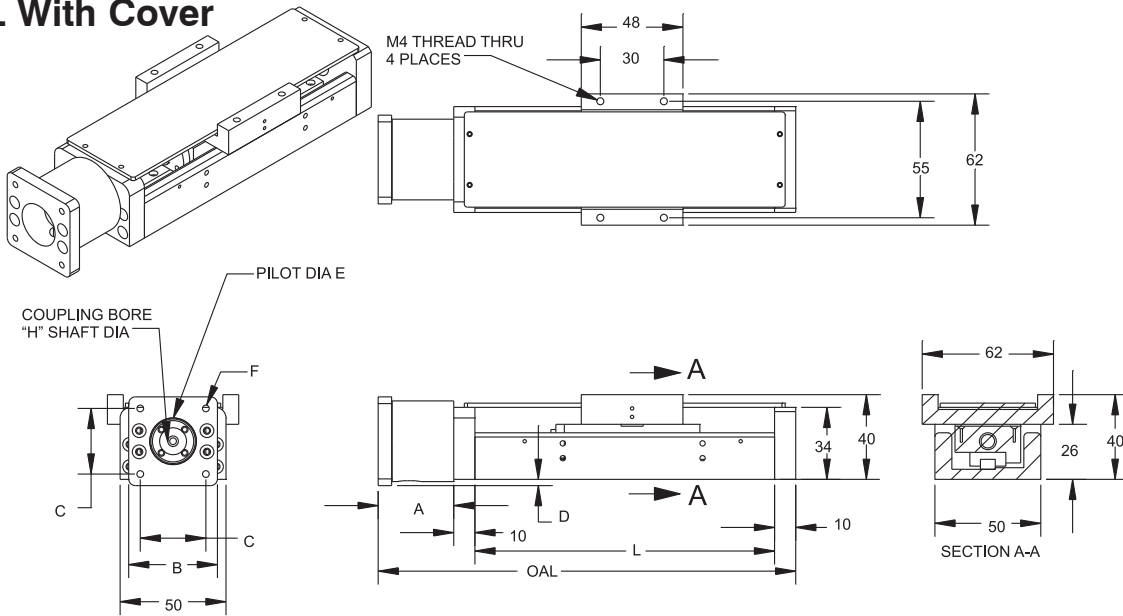
DL 26L

DL 26L

All units are in mm



DL 26L With Cover



Motor Options

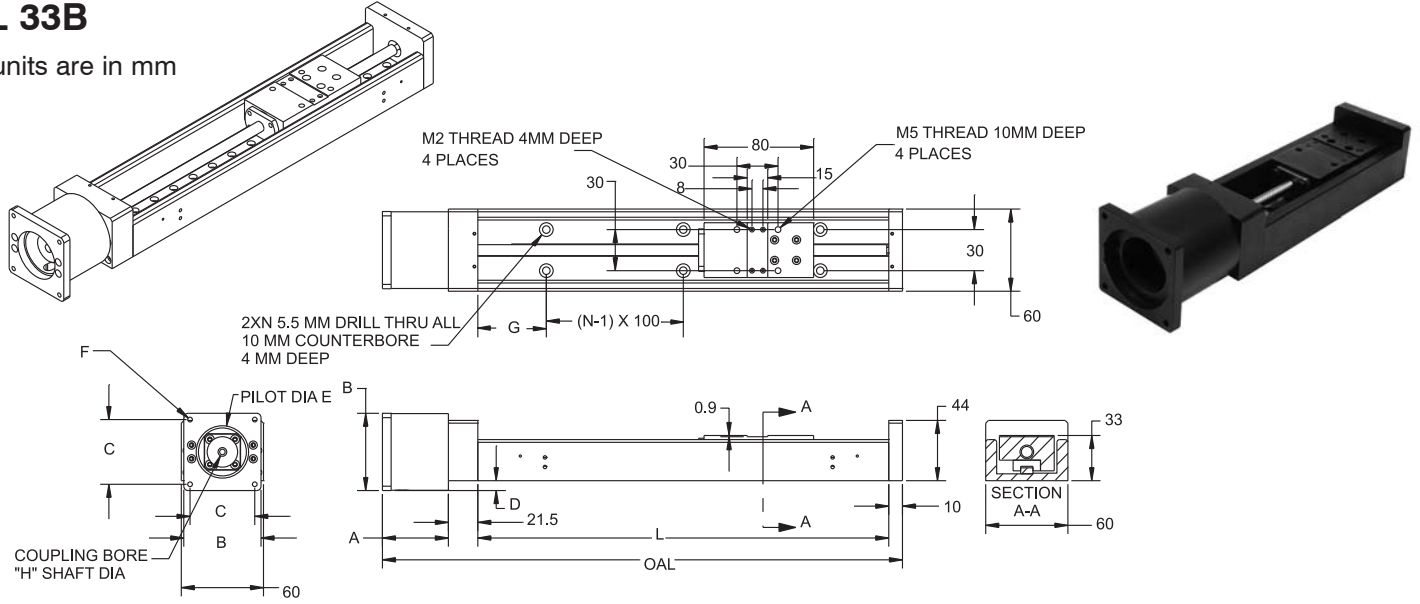
STEPPER MOTOR											
Travel	OAL	L	N	G	A	B	C	D	E	F	H
70	197.2	141.5	2	30.75							
120	247.2	191.5	3	15.75	35.7	42	31	3	22	3.2 THRU	5
170	297.2	241.5	3	40.75							
220	347.2	291.5	4	25.75							

SERVO MOTOR											
Travel	OAL	L	N	G	A	B	C	D	E	F	H
70	202.3	141.5	2	30.75							
120	252.3	191.5	3	15.75	40.8	42	32.5	3	22	M4 THREAD	6
170	302.3	241.5	3	40.75							
220	352.3	291.5	4	25.75							

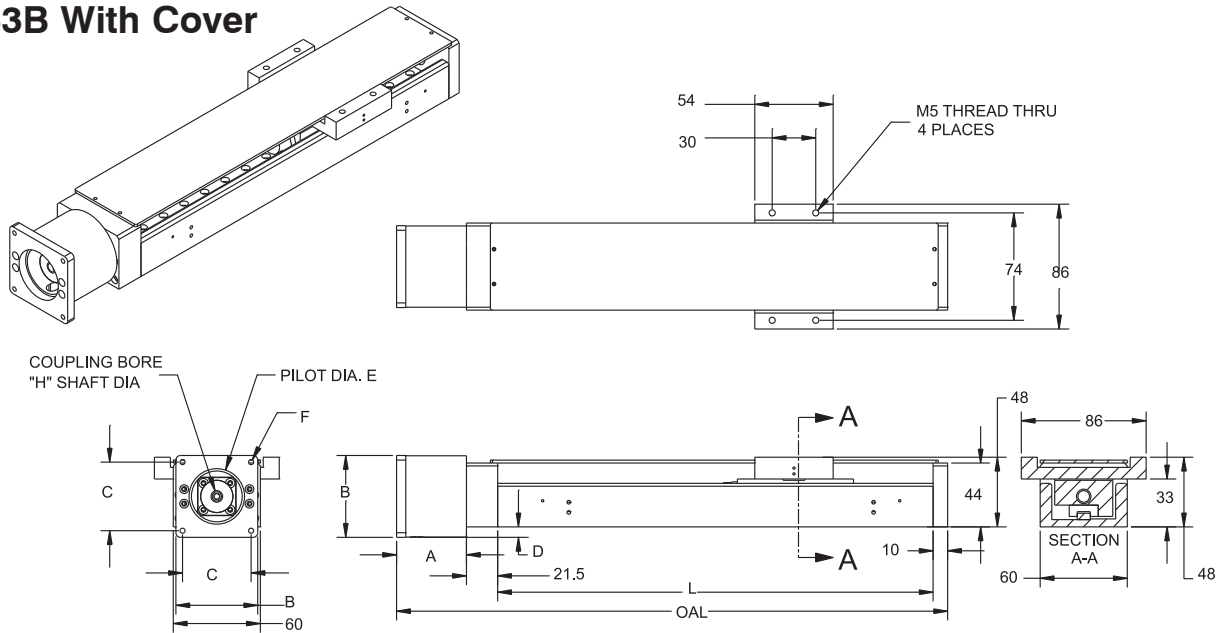
DL 33B

DL 33B

All units are in mm



DL 33B With Cover



Motor Options

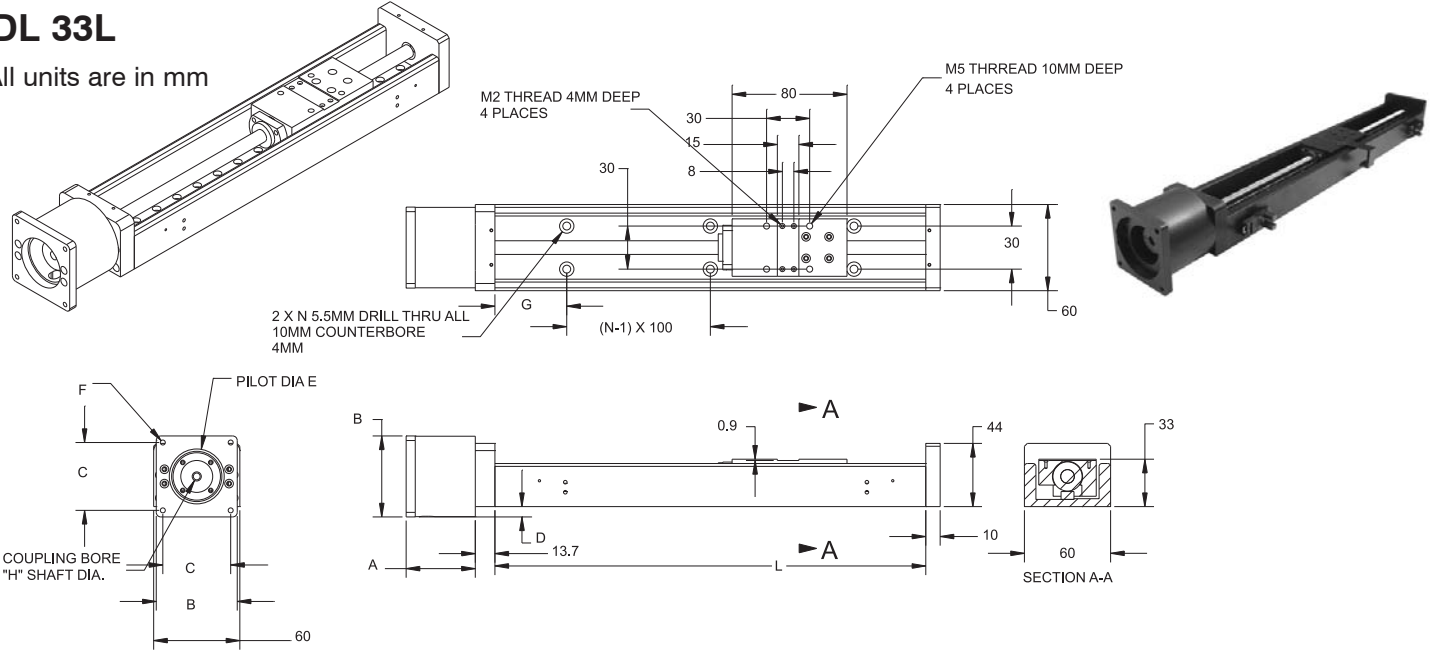
Travel	OAL	L	N	G	STEPPER MOTOR							
					A	B	C	D	E	F	H	
60	229.6	150	2	25								
110	279.6	200	2	50	48.1	56.4	47.2	7.2	38.2	8-32 THREAD	6.35(.250")	
210	379.6	300	3	50								
310	479.6	400	4	50								
410	579.6	500	5	50								

Travel	OAL	L	N	G	SERVO MOTOR						
					A	B	C	D	E	F	H
60	234.7	150	2	25							
110	284.7	200	2	50	53.2	60	49.5	8.9	50.1	M5 THREAD	8
210	384.7	300	3	50							
310	484.7	400	4	50							
410	584.7	500	5	50							

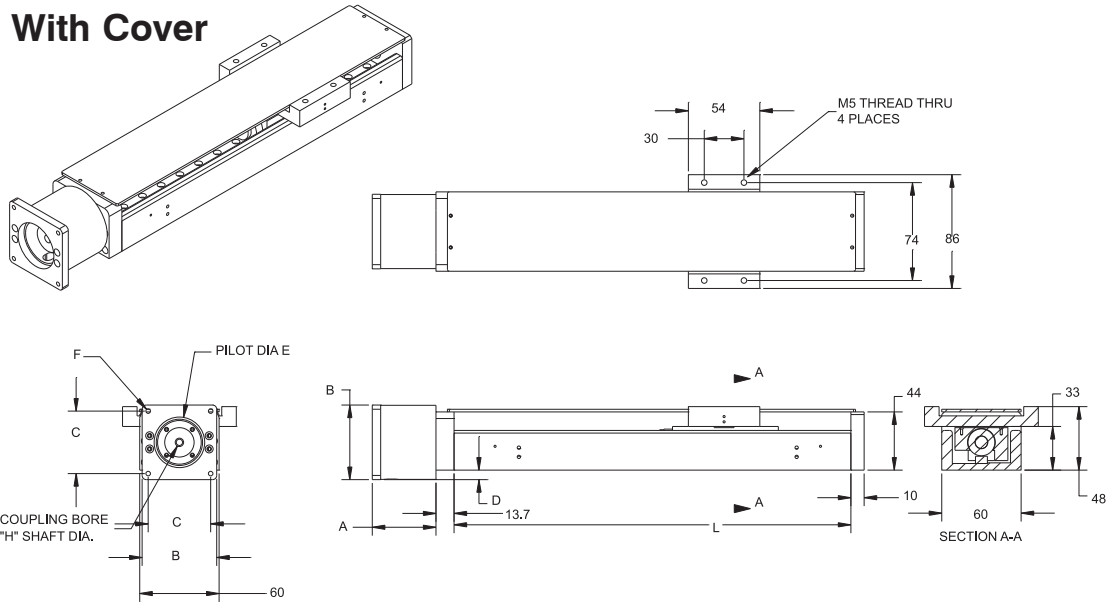
DL 33L

DL 33L

All units are in mm



DL 33L With Cover



Motor Options

Travel	OAL	L	N	G	STEPPER MOTOR							
					A	B	C	D	E	F	H	
60	221.8	150	2	25								
110	271.8	200	2	50	48.1	56.4	47.2	7.2	38.2	8-32 THREAD	6.35(.250")	
210	371.8	300	3	50								
310	471.8	400	4	50								
410	571.8	500	5	50								

Travel	OAL	L	N	G	SERVO MOTOR							
					A	B	C	D	E	F	H	
60	226.9	150	2	25								
110	276.9	200	2	50	53.2	60	49.5	8.9	50.1	M5 THREAD	8	
210	376.9	300	3	50								
310	476.9	400	4	50								
410	576.9	500	5	50								