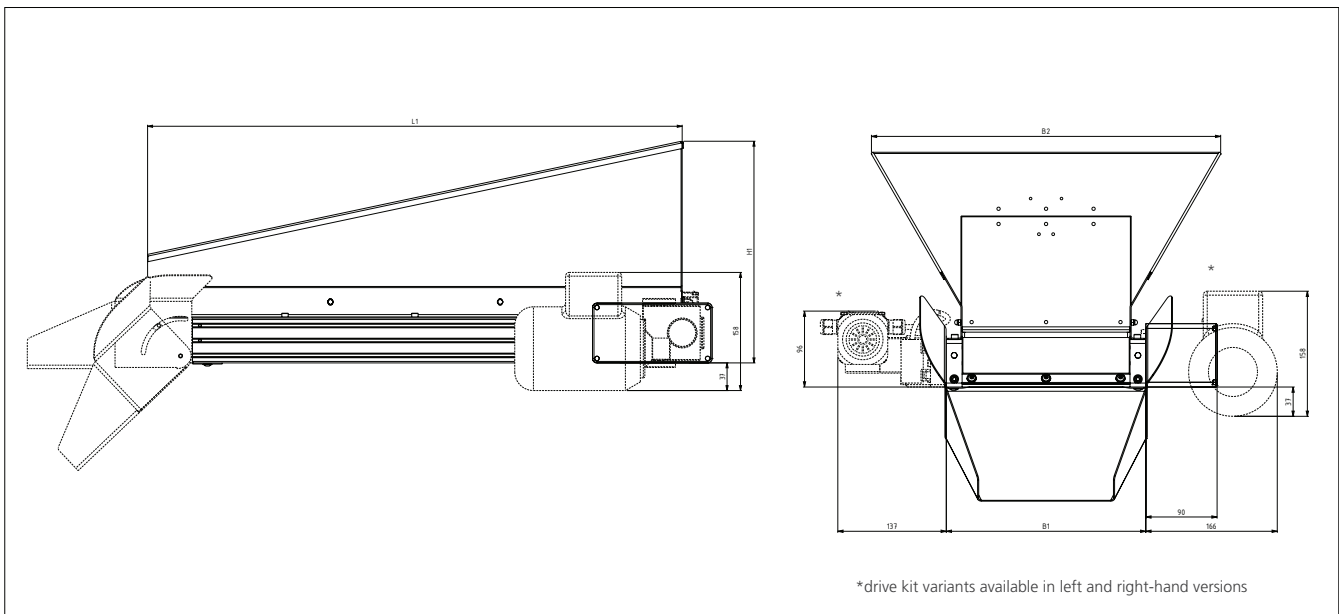


INCLINED BELT HOPPER

VARIANTS

Nominal volume:	30, 50, 70 and 100 litres
Belt body:	with aluminium profile, red anodized bearing brackets
Hopper bowl:	made of stainless steel
Belt type:	smooth two-layers PU with or without v-guides (FDA approved), Supergrip (textured)
Drive kits:	various options (view table)
Customized versions:	upon request

DIMENSIONS



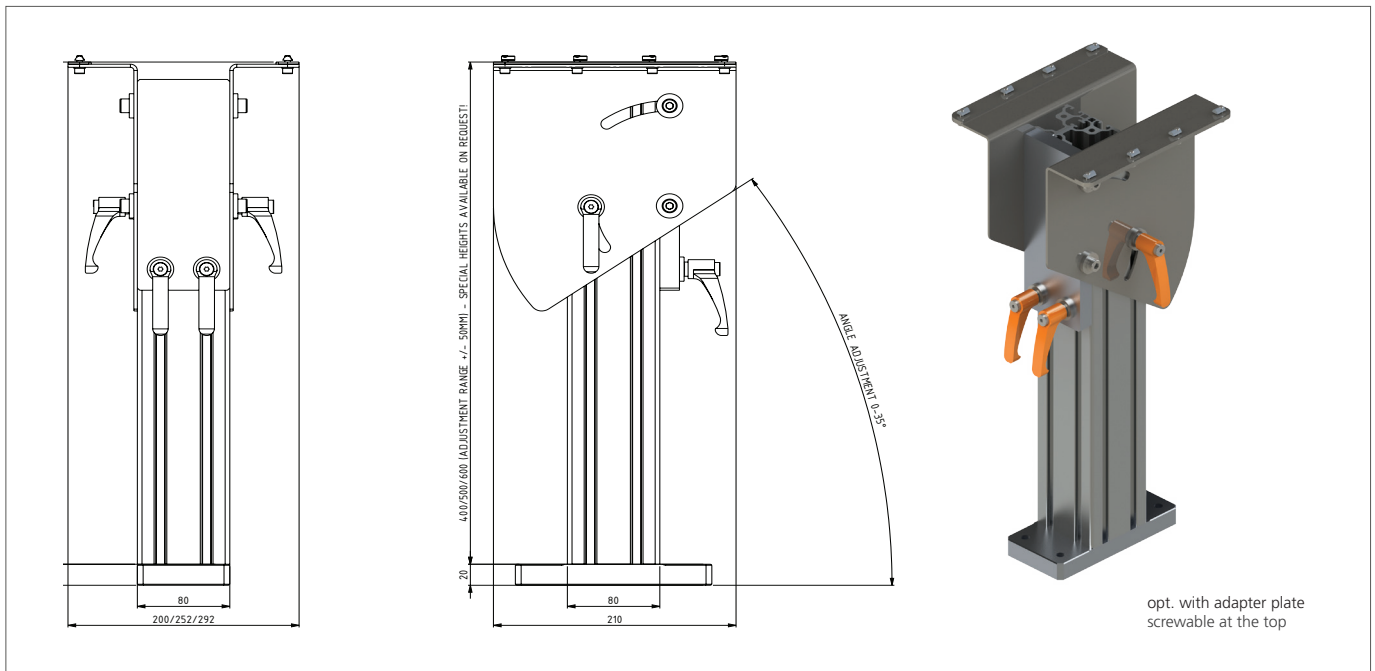
Type	Nominal volume [Litres]	L1* [mm]	B1* [mm]	B2* [mm]	H1* [mm]
SB30	30	715	252	447	297
SB50	50	915	292	591	387
SB70	70	1130	292	654	387
SB100	100	1345	292	832	417

DRIVE OPTIONS

	SB30	SB50	SB70	SB100
Nennvolumen	30 l	50 l	70 l	100 l
Device weight	20 kg	31 kg	37 kg	46 kg
24 VDC – Standard	3W/0,1A			
Conveyor speed	0,13 m/min	upon request	upon request	upon request
Fill weight	up to 20 kg			
1 x 230V 50Hz – Standard	3,5W/0,02A			
Conveyor speed	0,13 m/min	upon request	upon request	upon request
Fill weight	up to 20 kg			
1 x 230V/50Hz – Heavy duty	0,09kW / 1A	0,09kW / 1A	0,09kW / 1A	0,09kW / 1A
Conveyor speed	1,8 m/min / 2,2 m/min	1,8 m/min / 2,2 m/min	1,8 m/min / 2,2 m/min	1,8 m/min / 2,2 m/min
Fill weight	up to 60 kg	up to 60 kg	up to 60 kg	up to 60 kg
3 x 230V/400V 50Hz – Heavy duty	0,05kW / 0,4A	0,05kW / 0,4A	0,05kW / 0,4A	0,05kW / 0,4A
Conveyor speed	1,8 m/min / 2,2 m/min	1,8 m/min / 2,2 m/min	1,8 m/min / 2,2 m/min	1,8 m/min / 2,2 m/min
Fill weight	up to 60 kg	up to 60 kg	up to 60 kg	up to 60 kg
24VDC – Flexible	36-60W / 1,5-2,5A	36-60W / 1,5-2,5A	36-60W / 1,5-2,5A	36-60W / 1,5-2,5A
Conveyor speed	1,1 - 7,6 m/min	1,1 - 7,6 m/min	1,1 - 7,6 m/min	1,1 - 7,6 m/min
Fill weight*	up to 60 kg	up to 60 kg	up to 60 kg	up to 60 kg
1 x 230V 50Hz – Flexible	60W / 0,3A	60W / 0,3A	60W / 0,3A	60W / 0,3A
Conveyor speed	1,1 - 7,6 m/min	1,1 - 7,6 m/min	1,1 - 7,6 m/min	1,1 - 7,6 m/min
Fill weight*	up to 60 kg	up to 60 kg	up to 60 kg	up to 60 kg
3 x 230V/400V 50Hz – Flexible	60W / 0,15A	60W / 0,15A	60W / 0,15A	60W / 0,15A
Conveyor speed	0,95 - 7,6 m/min	0,95 - 7,6 m/min	0,95 - 7,6 m/min	0,95 - 7,6 m/min
Fill weight*	up to 60 kg	up to 60 kg	up to 60 kg	up to 60 kg

*dependent on gear reduction ratio

ACCESSORIES



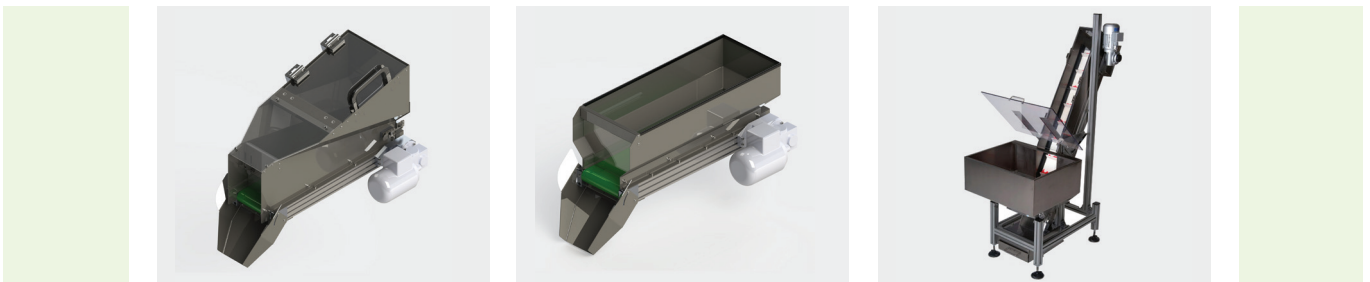
Mounting stand (adjustable angle and height)

In the range:

- >> short/long tipping chute
- >> bottom cover
- >> deflection cover
- >> quick emptying with deflection cover
- >> chute nose
- >> pc-cover with friction hinge
- >> cover lock
- >> fall brake for tipping chute
- >> protective surface for tipping chute
- >> fill level monitoring for hopper bowl

Further accessories and special versions **upon request!**

Visit our website: www.hamotek.de



HAMOTEK
Montagetechnik GmbH

Tel. +49 (0) 8654 / 770 96 63
office@hamotek.de
www.hamotek.de

Fürstenweg 1
83395 Freilassing
GERMANY

Assembly and manufacturing:
Eschstraße 38
88361 Altshausen/Mendelbeuren
GERMANY

HAMOTEK ■